

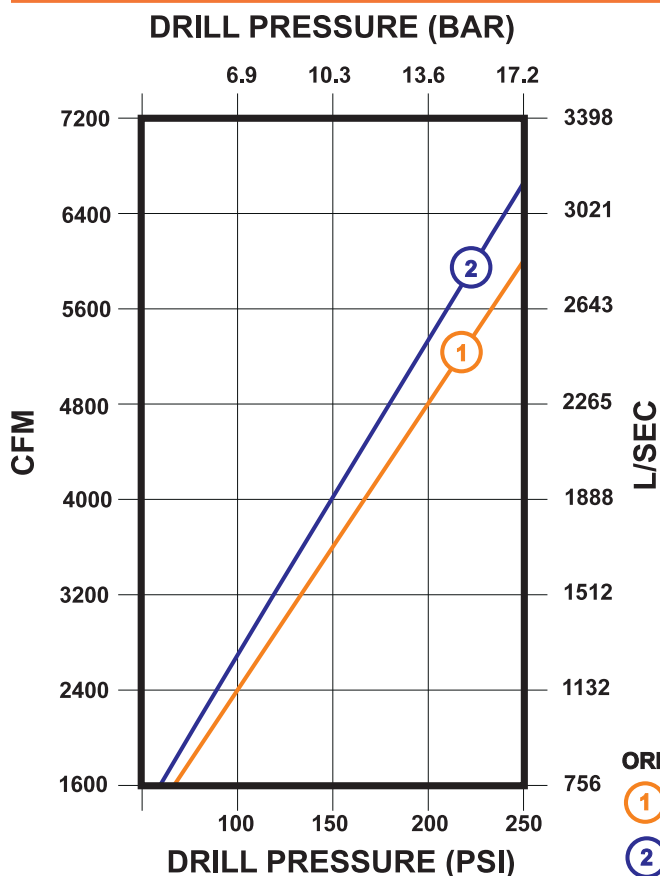


Champion[®] RC300 Down Hole Hammer

FEATURES

- Valveless down hole hammer design
- Ability to drill efficiently against high heads of water
- Designed to operate at pressures up to 200 PSI (13.6 BAR)
- Superior directional stability in horizontal applications
- Ejecting cuttings through the collection tube eliminates traditional hole cleaning problems
- Environmentally sensitive - no foam required for hole cleaning and lubricants are not free to contaminate the formation
- Typical vertical and horizontal applications include: caissons, piles/rock sockets, tunneling under roads, foundation drilling and other jobs where large volume rock excavation is required

AIR CONSUMPTION



SPECIFICATIONS

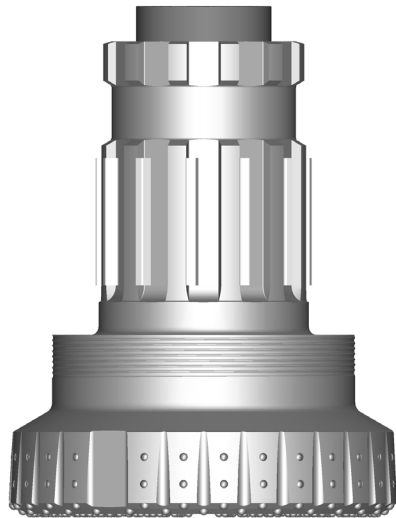
Diameter	28"	711 mm
Bore	20"	508 mm
Stroke	5"	127 mm
Weight (Hammer only)	11,584 lbs.	5,254 kg
Length (Shoulder to Shoulder)	93"	236 cm
Length (Shoulder to Bit Face)	112"	285 cm
Several backhead threads available		

- 900 blows per minute at 200 PSI (13.6 BAR)
- Drills holes from 30" to 38" (762 mm - 965 mm) in diameter
- Accepts RC300 bit shank



Down Hole Button Bits

Champion® RC300



RC300 Bit Shank

DIAMETER		WEIGHT*		FACES AVAILABLE
inches (millimeters)		pounds (kilograms)		
30"	(762 mm)	3847 lbs.	(1749 kg)	 Flat
32"	(813 mm)	4172 lbs.	(1896 kg)	
34"	(864 mm)	4497 lbs.	(2044 kg)	
36"	(914 mm)	5022 lbs.	(2283 kg)	
38"	(965 mm)	5301 lbs.	(2405 kg)	

* Bit weights are approximate

FEATURES

- Flat face design for advanced hole cleaning capabilities
- 3/4" (19 mm), 7/8" (22 mm) and 1" (25 mm) carbide options available
- Significantly larger spline area for exceptional strength and transfer of torque
- Plate drive system for increased spline life
- Side wear buttons are standard on all bits
- Several grades and types of carbide are available
- Other bit sizes may be available upon request

For More Information Contact:

646 Thompson Road • Thompson, CT 06277 USA
 Phone: (860) 923-9551 • Fax: (860) 923-2617
numa@numahammers.com • www.numahammers.com

