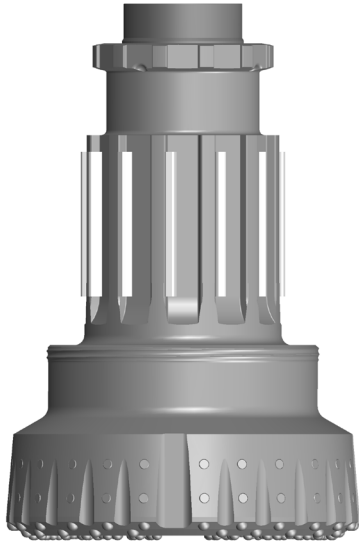


Down Hole Button Bits

Champion® RC210

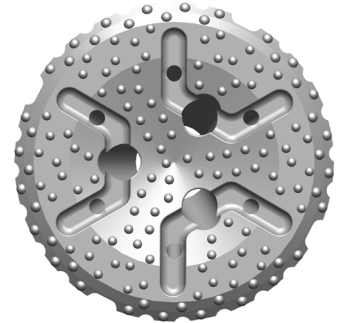


RC210 Bit Shank

| DIAMETER | | WEIGHT* | |
|----------------------|----------|--------------------|----------|
| inches (millimeters) | | pounds (kilograms) | |
| 21" | (533 mm) | 1650 lbs. | (748 kg) |
| 22" | (559 mm) | 1740 lbs. | (789 kg) |
| 24" | (610 mm) | 1910 lbs. | (866 kg) |
| 26" | (660 mm) | 2060 lbs. | (934 kg) |
| 28" | (711 mm) | 2200 lbs. | (998 kg) |

* Bit weights are approximate

FACES AVAILABLE



Concave

FEATURES

- Concave face design for advanced hole cleaning capabilities
- 3/4" (19 mm), 7/8" (22 mm) and 1" (25 mm) carbide options available
- Significantly larger spline area for exceptional strength and transfer of torque
- Plate drive system for increased spline life
- Side wear buttons are standard on all bits
- Several grades and types of carbide are available
- Other bit sizes may be available upon request

For More Information Contact:

646 Thompson Road • Thompson, CT 06277 USA
 Phone: (860) 923-9551 • Fax: (860) 923-2617
numa@numahammers.com • www.numahammers.com

