

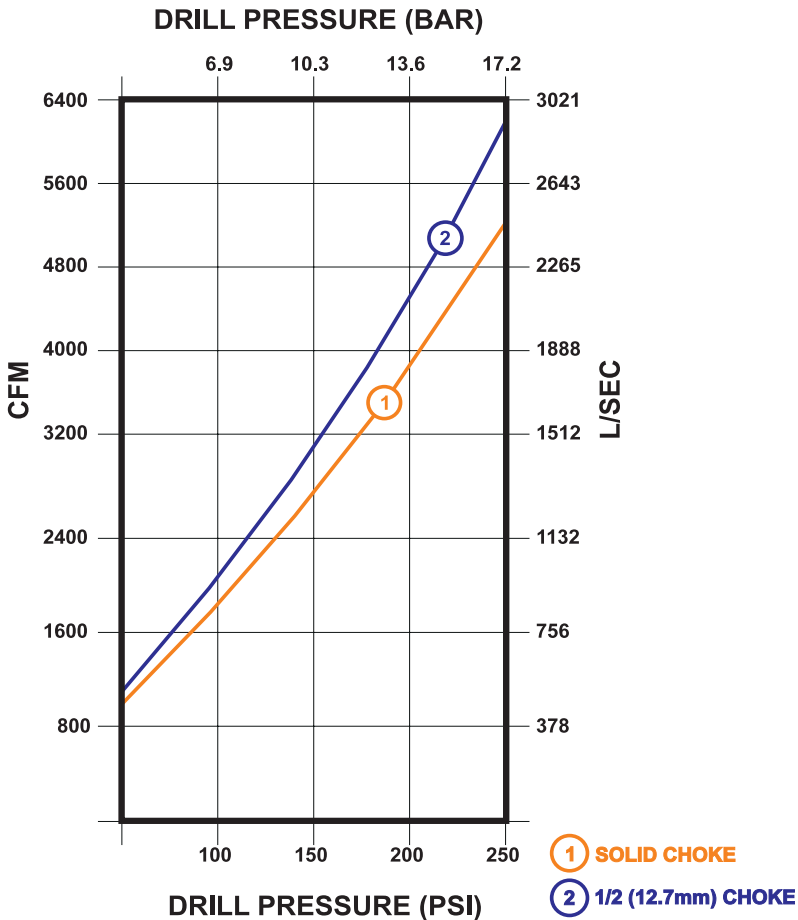


NUMA
Hammers and Bits
Patriot® 240
Down Hole Hammer

FEATURES

- Outdistances competitive hammers in both speed and longevity
- Simplified hammer design with less internal components
- Drills at high frequency to provide less vibration and smooth operation
- More efficient design requires less air which equals fuel savings
- Less overall parts promote easier maintenance
- Designed to operate at pressures up to 200 PSI (13.6 BAR)
- Ability to drill efficiently against high heads of water
- Plate drive system to eliminate spline wear and galling

AIR CONSUMPTION



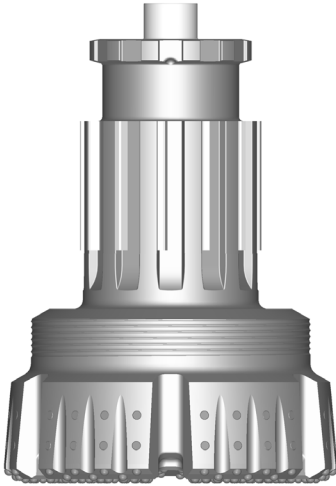
SPECIFICATIONS

Diameter	20"	508 mm
Bore	15"	381 mm
Stroke	5"	127 mm
Weight (Hammer only)	5109 lbs.	2317 kg
Length (Shoulder to Shoulder)	76-1/8"	193 cm
Length (Shoulder to Bit Face)	90-1/8"	229 cm
A.P.I. Reg. Threads	8-5/8	

- 925 blows per minute at 200 PSI (13.6 BAR)
- Drills holes from 24" to 36" (610 mm - 914 mm) in diameter
- Accepts P240 bit shank

Down Hole Button Bits

Patriot® 240



P240 Bit Shank

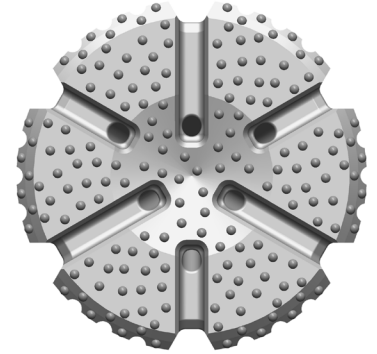
DIAMETER
inches (millimeters)

WEIGHT*
pounds (kilograms)

FACES AVAILABLE

24"	(610mm)	2174 lbs.	(987 kg)
26"	(660 mm)	2320 lbs.	(1053 kg)
28"	(711 mm)	2461 lbs.	(1117 kg)
30"	(762 mm)	2608 lbs.	(1184 kg)
32"	(813 mm)	3197 lbs.	(1451 kg)
34"	(864 mm)	3378 lbs.	(1534 kg)
36"	(914 mm)	3500 lbs.	(1588 kg)

* Bit weights are approximate



Concave / Flat

FEATURES

- Concave or Flat face design for advanced hole cleaning capabilities
- 3/4" (19 mm), 7/8" (22 mm) and 1" (25 mm) carbide options available
- Several grades and types of carbide are available
- Significantly larger spline area for exceptional strength and transfer of torque
- Plate drive system for increased spline life
- Side wear buttons are standard on all bits
- Other bit sizes may be available upon request

For More Information Contact:

646 Thompson Road • Thompson, CT 06277 USA
Phone: (860) 923-9551 • Fax: (860) 923-2617
numa@numahammers.com • www.numahammers.com

