

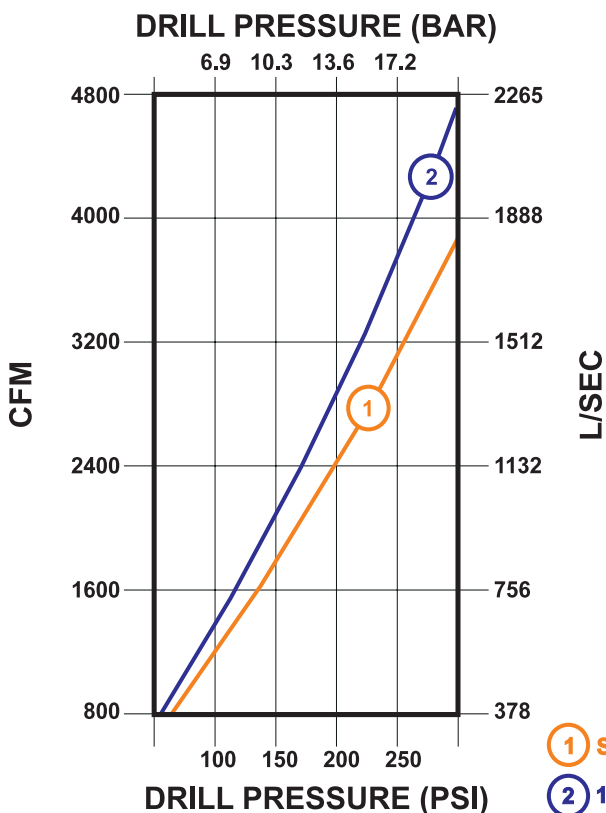


HAMMERS AND BITS
Patriot® 185
Down Hole Hammer

FEATURES

- Outdistances competitive hammers in both speed and longevity
- Simplified hammer design with less internal components
- Drills at high frequency to provide less vibration and smooth operation
- More efficient design requires less air which equals fuel savings
- Less overall parts promote easier maintenance
- Designed to operate at pressures up to 250 PSI (17.2 BAR)
- Ability to drill efficiently against high heads of water
- Plate drive system to eliminate spline wear and galling

AIR CONSUMPTION



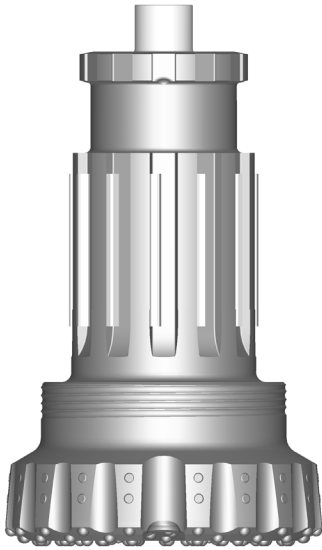
SPECIFICATIONS

Diameter	15-1/2"	394 mm
Bore	13-1/4"	337 mm
Stroke	5"	127 mm
Weight (Hammer only)	3149 lbs.	1428 kg
Length (Shoulder to Shoulder)	70-9/16"	179 cm
Length (Shoulder to Bit Face)	80-9/16"	205 cm
A.P.I. Reg. Threads	8-5/8	

- 900 blows per minute at 200 PSI (13.6 BAR)
- Drills holes from 18" to 30" (457 mm - 762 mm) in diameter
- Accepts P180 bit shank

Down Hole Button Bits

Patriot® 185



P180 Bit Shank

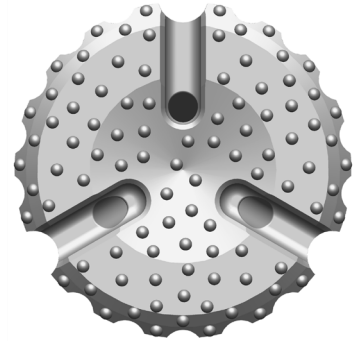
DIAMETER
inches (millimeters)

WEIGHT*
pounds (kilograms)

FACES AVAILABLE

18"	(457 mm)	1029 lbs.	(468 kg)
20"	(508 mm)	1254 lbs.	(570 kg)
22"	(559 mm)	1347 lbs.	(612 kg)
24"	(610 mm)	1616 lbs.	(735 kg)
26"	(661 mm)	1751 lbs.	(796 kg)
28"	(711 mm)	2007 lbs.	(912 kg)
30"	(762 mm)	2275 lbs.	(1034 kg)

* Bit weights are approximate



Concave / Flat

FEATURES

- Concave or Flat face design for advanced hole cleaning capabilities
- 3/4" (19 mm), 7/8" (22 mm) and 1" (25 mm) carbide options available
- Several grades and types of carbide are available
- Significantly larger spline area for exceptional strength and transfer of torque
- Plate drive system for increased spline life
- Side wear buttons are standard on all bits
- Other bit sizes may be available upon request

For More Information Contact:

646 Thompson Road • Thompson, CT 06277 USA
Phone: (860) 923-9551 • Fax: (860) 923-2617
numa@numahammers.com • www.numahammers.com

