



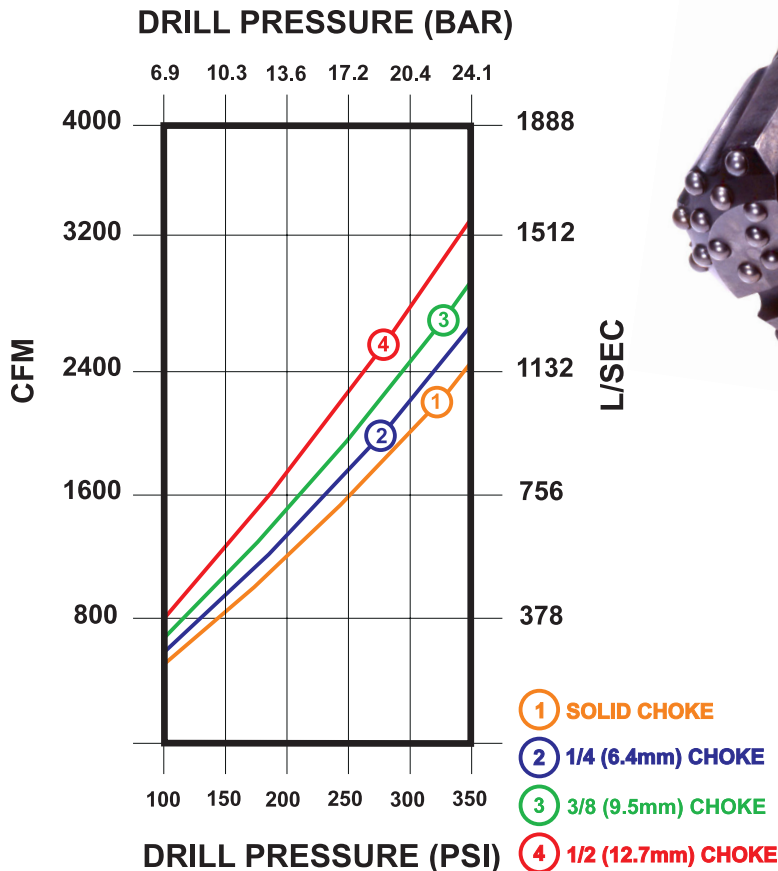
Challenger[®] 100

Down Hole Hammer

FEATURES

- Valveless down hole hammer design
- Designed to operate at pressures up to 250 PSI (17.0 BAR)
- Hardened, reversible, non-ported case for extended life
- For use in any hard rock application
- Suitable for drilling oil & gas wells, water wells, piling holes, elevator shaft holes and other construction jobs where large volume rock excavation is required

AIR CONSUMPTION



SPECIFICATIONS

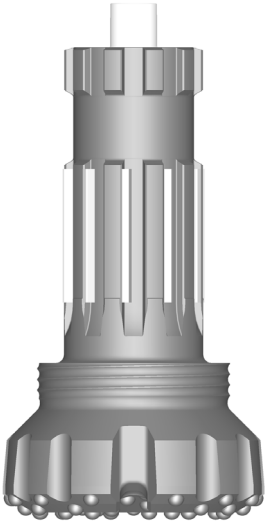
Diameter	9"	229 mm
Bore	7-1/2"	191 mm
Stroke	5"	127 mm
Weight (Hammer only)	750 lbs.	340 kg
Length (Shoulder to Shoulder)	58-7/16"	148 cm
Length (Shoulder to Bit Face)	66"	160 cm
A.P.I. Reg. Threads	6-5/8"	

- 1235 blows per minute at 250 PSI (17.0 BAR)
- Drills holes from 9-7/8" to 15" (251 mm - 381 mm) in diameter
- Accepts N100 bit shank



Down Hole Button Bits

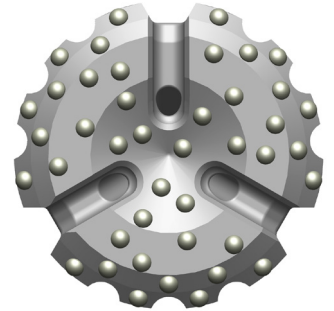
Challenger® 100



N100 Bit Shank

DIAMETER		WEIGHT*	
inches (millimeters)		pounds (kilograms)	
9-7/8"	(251 mm)	210 lbs.	(96 kg)
10"	(254 mm)	224 lbs.	(102 kg)
10-5/8"	(270 mm)	235 lbs.	(107 kg)
11"	(280 mm)	242 lbs.	(110 kg)
12"	(305 mm)	285 lbs.	(129 kg)
13"	(330 mm)	290 lbs.	(132 kg)
14"	(356 mm)	355 lbs.	(161 kg)
15"	(381 mm)	377 lbs.	(171 kg)

FACES AVAILABLE



Concave

* Bit weights are approximate

FEATURES

- 3/4" (19 mm) diameter carbide buttons throughout face
- Carbide buttons positioned for better fracture of rock providing faster penetration rates
- Several grades and types of carbide are available
- Significantly larger spline area for exceptional strength and transfer of torque
- Plate drive system for increased spline life
- Side wear buttons are available as an option
- Other bit sizes may be available upon request

For More Information Contact:

646 Thompson Road • Thompson, CT 06277 USA
 Phone: (860) 923-9551 • Fax: (860) 923-2617
 numa@numahammers.com • www.numahammers.com

